

TP-83E

TPMS FOR Truck



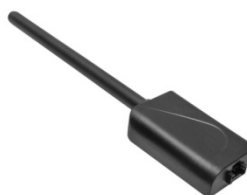
Category: TPMS for Truck

Model No.: TP-83E

Product Photo: Truck Sensor (BSE128)



Antenna



Repeater (8m)



Display



Dimension:L138 * W70 * H20 mm

Certification: TBA

Package Photo:



(for reference)

Includes:



(for reference)

Display	X	1 pc
Sensor	X	10 pcs
Antenna	X	1pc
Repeater	X	1 pc
Cable (display to antenna)	X	1 pc
Spanner	X	1 pc
Sensor tool	X	1 pc
Nut	X	11 pcs
Washer	X	11 pcs
Manual	X	1 pc

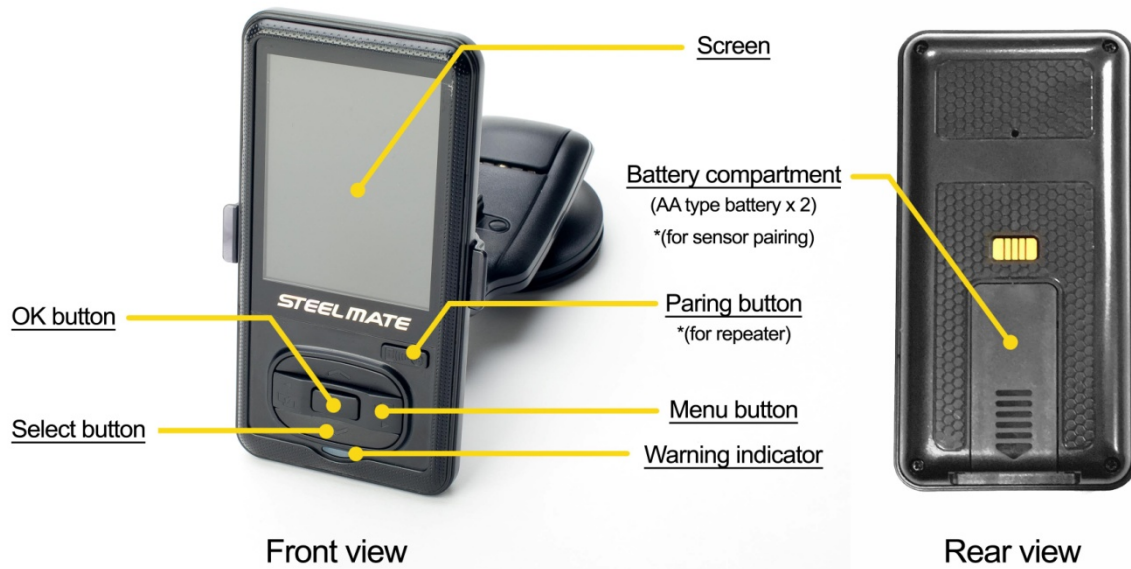
Key Features:

- Special for truck (12~24V)
- External truck sensor
- Sensor pressure range: 0~14.0Bar / 0~203 PSI
- Max. 10 tires in tractor and max.20 tires in trailer available
- Waterproof compact-size repeater included (IP rating: IPX7)
- Sensor in trailer can be paired automatically when repeater matches with display
- Built-in TPMS sensor partner with dry battery power
- Adjustable backlight brightness
- Real-time tractor and trailer sensor data can be shown separately
- Sensor preset in factory, no pairing is needed
- Low power consumption in sensor
- Replaceable sensor battery (CR2050HR)
- Sensor with wide range of operating temperature (-40°C~+105°C/-40°F~+221°F)

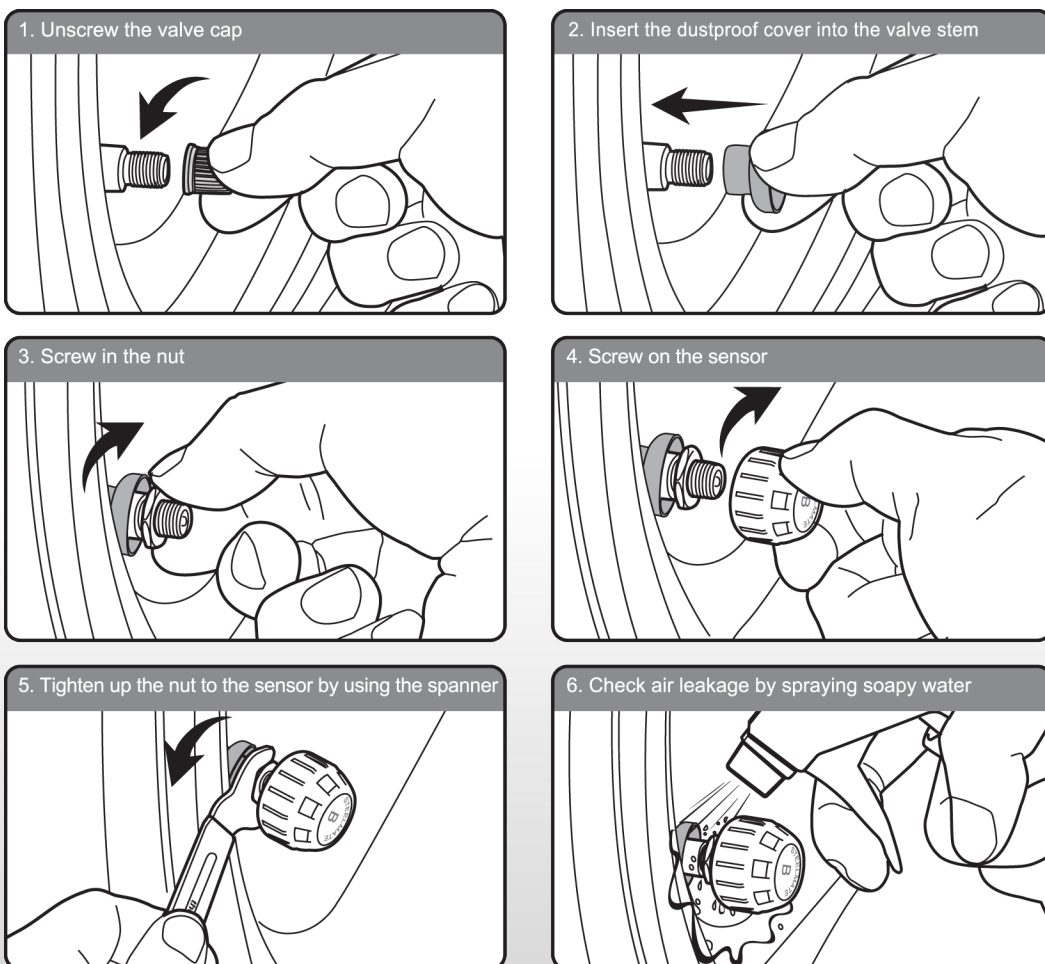
Functions:

- Tire serial number on display scrolls every 2 seconds to show the tire pressure & temperature of corresponding tire
- The tire status will be recorded automatically once abnormal tire happened
- Intelligent sleeping mode for power saving
- Adjustable threshold value of tire pressure & temperature
- Convertible pressure & temperature unit (PSI / Bar , °C / °F)
- Visual and audible warning
- High tire temperature warning
- Low sensor battery warning
- Sensor failure warning
- Leakage warning

Brief look of display:



Sensor installation:



Technical Specifications:Sensor:

Operating Frequency:	433.92MHz \pm 0.05MHz
Operating Voltage:	2.1~3.3V
Operating current:	\leq 16mA
Static current:	\leq 1uA
Operating Temp.:	-40°C ~ +105°C / -40°F ~ + 221°F
Storage Temp:	-40°C ~ +125°C / -40°F ~ + 257°F
Battery Model:	CR2050HR
Battery Life:	\geq 3 years

Display:

Operating Frequency:	433.92MHz \pm 0.05MHz
Operating Voltage:	9~28V
Operating Temp:	-20°C ~ +70°C / -4°F ~ +158°F
Storage Temp:	-40°C ~ +125°C / -40°F ~ + 257°F

Repeater:

Operating Frequency:	433.92MHz \pm 0.05MHz
Operating Voltage:	9~28V
Operating Temp.:	-20°C ~ +85°C / -4°F ~ + 185°F
Storage Temp:	-40°C ~ +125°C / -40°F ~ + 257°F

Alarm Value:

Adjustable High pressure value: 4.0~13.9 Bar / 58~202 Psi

Adjustable Low pressure value: 1.0~9.0 Bar / 15~131 Psi

Adjustable High temperature value: 70~99°C / 158~210°F

Default value:

High pressure value: 10.0 Bar / 145Psi

Low Pressure value: 7.0 Bar / 101 Psi

High temperature value: 80 °C / 176°F

Note: The alarm pressure value suggest to be $\pm 25\%$ of recommended tire pressure